



School Improvement Plan 2010 - 2011

'Believe and Achieve, Shine Every Day'

Priorities
Working Document

School Improvement Plan

Priorities

<u>Contents</u>	<u>Page No:</u>
Vision and Aims	Page 3
Mission Statement	Page 4
Summary of priorities identified for 2010-11	Page 5
School Strategic Development 2010 - 2013	Page 7
Operational and Strategic Improvement Plan	Page 10
School Improvement Team 1 (Accelerating Progress and Attainment)	Page 12
SIT 1 Termly Review and Action Plan	Page 13
School Improvement Team 2	Page 14
SIT 2 Termly Review and Action Plan	Page 16
SIP Resource and Professional Development Plan	Page 17
Appendix 1 (Raising Attainment Plans)	Page 23

Edge Hill Junior School

Believe and Achieve, Shine Every Day

School Vision and Aims

The school will be a vibrant learning community in which everyone will feel valued and can achieve their full potential so they can contribute positively to society.

Aims

To achieve our vision we will work with all stakeholders so that pupils:

Personal Attributes

- Become confident and responsible adults
- Can cooperate and work in a team
- Develop respect for others, are honest and have a sense of right and wrong
- Become environmentally aware and understand their role in a wider society
- Are able to make considered judgements regarding moral, spiritual and emotional issues
- Become spiritually comfortable, socially adept, morally sound and culturally aware
- Are responsible for their own actions and take the consequences
- Develop a realisation that they are the 'caretakers' of their environment.

Standards of achievement

- Become literate and numerate so they can apply their skills and knowledge and understanding to enhance their own and others lives
- Develop technological skills and knowledge so they can access lifelong learning.
- To be able to communicate in a variety of ways
- Have a knowledge and understanding of the humanities, arts, health and current affairs

Qualities as learners

- Become confident, independent learners
- Become well adjusted and hardworking
- Take pride in themselves and their work
- Show empathy and have high self-esteem

Attitudes

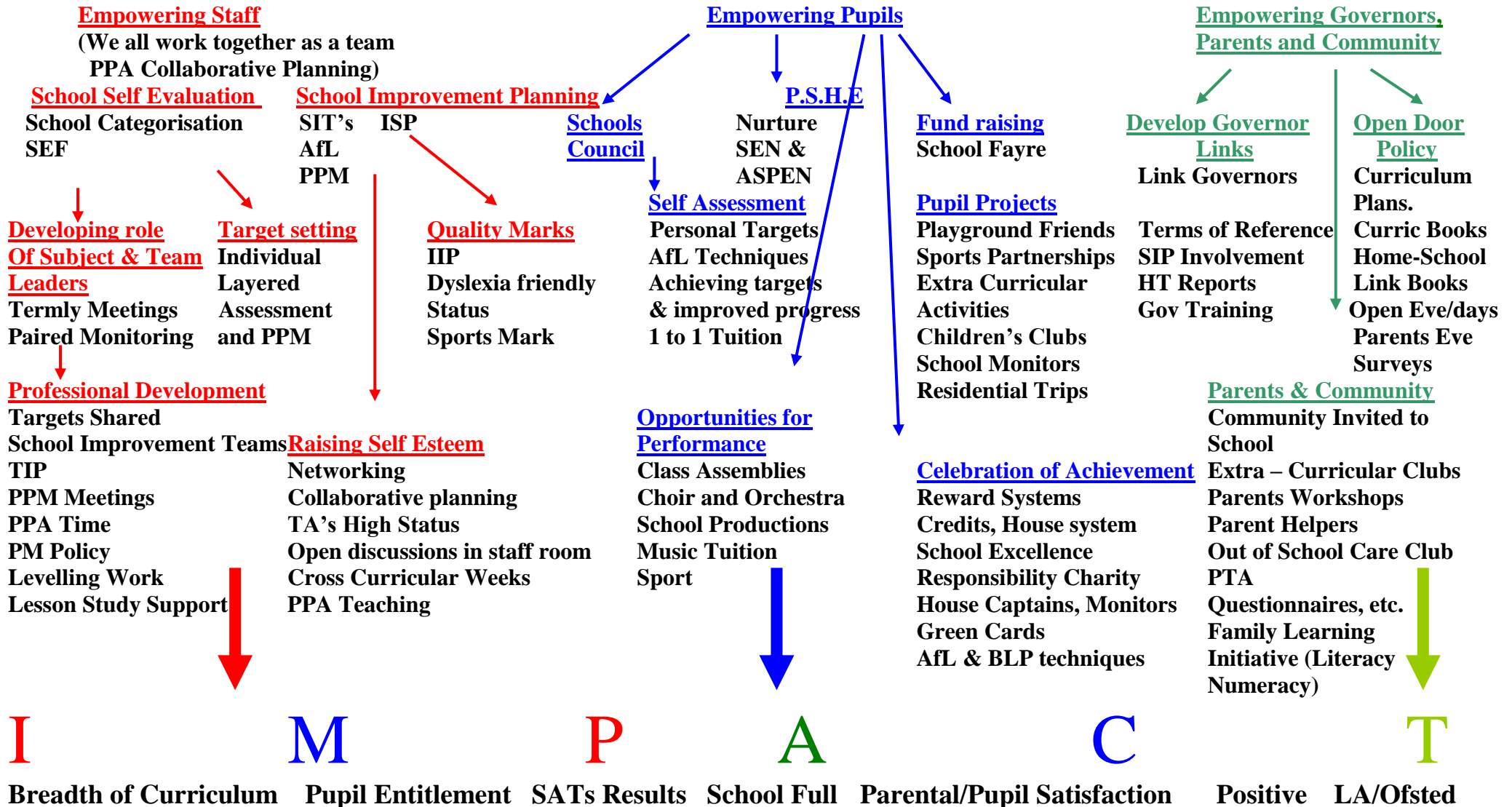
- Are positive and determined

EDGE HILL JUNIOR SCHOOL

Mission Statement

At Edge Hill Junior School we aim to ensure that everyone will feel valued and can achieve their full potential within a happy, purposeful and vibrant learning community.

“Leading and learning collaboratively”



Summary of Priorities from 2009 – 2010 SIP

Main Priorities

- Further developing Assessment for Learning (Using assessment information to set clear targets through tracking and raising levels of expectations.) To ensure early identification of children not on track and providing appropriate support and challenge and to provide more guidance for pupils to support them in developing the skills and attitudes to complete peer and self-assessment. To continue to embed layered targets for writing and maths across the school and use them consistently to their full potential (BLP – Assembly Themes)
- Improving the consistency and quality of teaching and learning by developing strategies that promote active learning; opportunities for independent learning and application of knowledge and skills; focussed marking and target setting
- To review curriculum provision to ensure it is a creative, stimulating curriculum with good coverage of all subjects and fulfils the requirements of the New primary Curriculum.
- To further develop and improve community cohesion

To work towards the following school targets

Whole School

2010 Targets

L4+ in English and Maths	89%
2 levels progress in English	83%
2 levels progress in Maths	83%

Increase the number of children achieving level 5 in Science

2011 Targets

L4+ in English and Maths	
2 levels progress in English	
2 levels progress in Maths	

Year group progress Targets

To raise expectations and accountability year group targets are as follows:

English Between 2009 and 2010 80% of children making 2 subsets of a level progress.

Numeracy Between 2009 and 2010 78% of children making 2 subsets of a level progress.

Over 85% of target groups in each year to achieve their layered targets.

In 2010 85% to make age related expectations

In 2011 87% to make age related expectations

- To further develop APP in Mathematics
- To implement the anti bullying pledge (summer 2010)
- Improve subject leader's knowledge and skills
- Achieve Healthy School Status (Dec 2010)

School Strategic Development 2010 - 2013

Every Child Matters

Our school and community learning partnership offers:

- High quality wraparound child care
- A varied menu of activities to extend and enrich learning
- Parenting support including information sessions, and family learning
- Swift and easy referral to a range of specialist support services
- Providing wider community access to ICT, sports and arts facilities including adult learning.

Action Planned for 2010 – 2011

Be Healthy

This places a responsibility on schools to consider all aspects of the health of young people in their care.

During 2010 – 2011 Edge Hill will:

Continue to provide ASPEN support.

Achieve Healthy School Status (Dec 2010)

Continue to work with Parents and school staff to promote healthy eating

Provide subsidised fruit for all children.

Provide workshops for parents on healthy eating, hygiene.

Work with the South Staffordshire Sports Partnership to maintain ‘Active Mark’ Status

Provide after school sports clubs and promote fitness through activities organised in conjunction with the school sports partnership.

Provide PSHE curriculum that includes hygiene and sex education programmes.

Stay Safe

In schools, this can range from identifying safer routes to school to the creation of anti-bullying measures, peer-buddy schemes and emotional intelligence work to promote children’s happiness.

During 2010 – 2011 Edge Hill will:

Continue to provide nurture provision for those most vulnerable children 3 times a week.

Work with police and fire services to provide curriculum support

Police to provide work with Y3 and Y4 focussing on safety.

Provide systems to support all children’s welfare

To continue cycle proficiency training for Y6 in school

Review its behaviour and anti-bullying policy

Introduce Staffordshire ‘Anti-Bullying pledge.

Review and improve security of the school site

Ensure all safeguarding procedures are in place and implemented fully.

Enjoy and Achieve

Personalised learning has been targeted as an important factor in stimulating children's enjoyment and achievement. Schools need to identify children's individual learning needs and involve them in decision making processes. Children have a right to enjoy school and recreation, achieve national standards as well as the right to personal and social development

During 2010 – 2011 Edge Hill will:

Maintain Full Dyslexia Friendly Status

Accelerate progress and improve attainment through introducing layered targets, improving tracking and assessing pupil's progress (Using APP techniques). This will develop personalised learning and increase expectations.

Further develop the role of the school council

Continue to involve children and parents in school improvement planning

Identify and target those children who are underachieving through timely and effective intervention strategies including 1 to 1 support

Give children personal targets and engage in a dialogue for improvement

To continue to provide a broad, balanced and creative curriculum for all children that meets the aims of the new National Curriculum.

Extending the Difference and Diversity project into Y3 and Y4.

Implement the 'Get Active' ES subsidy and National Home Access Programme

Making a Contribution

Children must participate in decision making, volunteering and supporting the community and environment, abiding by the law and school rules, developing positive relationships, dealing with major life changes and building confidence.

During 2010 – 2011 Edge Hill will:

Improving community cohesion through developing learning opportunities and closer links with the local and wider community.

Extend the role of the schools council

Ensure the PSHE curriculum provides opportunities for developing citizenship and responsibility.

Children to be involved in regular fund raising (Termly) organised by the school and by themselves.

Children to run school clubs for other children.

Children to be involved with the 'Green Team'.

Develop links with members of the community.

Continue to develop and improve communication with parents through Curriculum books; open days/evenings, parent's workshops and regular teaching and learning updates

Provide training for School link Governors with subject leaders

Economic Well-being

Schools are responsible for nurturing children's aspirations, help them to set goals and work with other agencies to achieve these.

During 2010 – 2011 Edge Hill will:

Set personal targets and layered targets for all children.

Further improve teaching to ensure all children know what is expected of them and what they need to do to improve.

Use APP techniques to inform teaching and learning and ensure children are working at age-related expectations.

Ensure AfL and Personalised Learning supports all children's development.

Work with the School Sports Partnership to maintain and extend P.E. and after school activities.

Extend weekly French lessons for all year groups by Sept 2010.

Provide additional support (Intervention through springboard and ALS) for those children who are not making expected progress.

Provide 1 to 1 tuition for underachieving children

Improvement Plan (Operational and Strategic Plan)

	Operational (Short term)					Strategic (Long Term)	
Key Area/ Priority	2010			2011		2012	2013
	Summer	Autumn	Spring	Summer	Autumn		
Be Healthy	Achieve 'Active Mark'	Subsidised Fruit		Maintain 'Active Mark'		Build an all weather pay area.	
	ASPEN Worker Provide additional sports through CLP	Achieve HSS (Dec) Organise Workshops – healthy eating					
Stay Safe	PSHE Develop Curriculum –being safe Y3 and Y4 Being Safe (Police) Y6 Cycle Proficiency	Review behaviour policy. Anti-Bullying pledge New entrance and fencing and Development of school site and controlled entrance		Y3 and Y4 Being Safe (Police) Y6 Cycle Proficiency	Review Child protection and safeguarding.		
Enjoy and Achieve	Maintain TIP Embed APP MA1 Review Curriculum	Audit Foundation subjects APP MA3 & 4	PPM x 2	PPM x 2 Evaluate impact of changes to org.	Implement new curriculum – ongoing development		Refurbish classroom for community use.
	Review assessment policy Develop Community Cohesion	PPM x 2 Learning in the community					
	Difference & Diversity	Project Y3 & Y4		Y5	Y6		
	Implement 'Get Active' Subsidy. Develop use of SLN2	(Trial info to parents)					

	Operational (Short term)					Strategic (Long Term)	
Key Area/ Priority	2010	2011				2012 – 2013	
	Summer	Autumn	Spring	Summer	Autumn		
Making a Contribution	Extend role of school council						
	Review and extend community cohesion provision	(Performances in the community)	→				
	Green Team (use of Greenhouse)				→		
	Extend methods of communication and support to parents	→					
Economic Well- Being	Layered and personal targets (PODs)					→	
	Identify and support target groups. (ALS, 1 to 1 tuition, springboard)	French Y3 – Y6	→				
	Work with School Sports Partnership to extend access to sports					→	
	Ensure AFL and personalised support all children's learning						

School Improvement Plan 2010 – 2011/12 School Improvement Team 1

Whole School Aim activity relates to: (refer to school vision and aims) For all children to become literate and numerate so they can apply their skills and knowledge		Innovation	Date Started	
			April 2010	
Goal: (desired result – outcome of action) All children to be working at or above age-related expectations.				
Objective: (what different/specific objectives set to achieve goal)		Success Criteria: (indicator linked to each objective to show it has been achieved)		
1. To ensure that the % of children achieving level 4+ in Literacy and numeracy is 89 in 2010 and the % of children making 2 levels progress is 83% in English and Maths respectively. 2. To ensure that the quality of teaching is improved and the expectations are raised so that children make satisfactory or better progress in relation to targets set. 3. To improve all subject leaders leadership skills (monitoring and evaluation) in order to improve and raise standards across the curriculum. 4. To ensure that assessment and tracking data and targeted support are used consistently provides clear guidance through AFL to ensure all children, particularly boys in writing make accelerated progress to achieve age-related expectations.		1. 89% of children achieve level 4+ in English and mathematics 2. Teaching profile improves. Children make satisfactory or better progress to targets. 3. All subject leaders skills are improved and impact on raising standards and accelerating progress 4. Subject leadership has improved as evidenced through higher standards.		
Action Planned: (to achieve specific objectives – time and who responsible) (break down action into terms) See Termly Rising Attainment Plan (RAPs) Priority 1 Raising attainment and accelerating progress Priority 2 To improve the quality of teaching and learning Priority 3 To improve the conditions for learning Priority 4 To develop the school as a professional learning community In addition to RAP whole school staffing structure and organisation to be reviewed and re-structured to meet needs and increased expectations (May 2010 – MM with SLT)		Resources /PD LA support through ISP.	Monitoring (completed by SLT) Termly (see RAP) PPM Half termly	Impact/Evaluation (complete in year see RAP reviews)
Quality Characteristics: (when the goal is achieved what will the provision/activity/result look like across the school)		Notes/Issues: (to be completed in year)		
<ul style="list-style-type: none"> All children will be working at or above age-related expectations and have made satisfactory or accelerated progress. Children will be more active in their learning and understand their targets how they can achieve them and what they need to do to improve further. 				

SIP – Termly Review and Action Planning**School Improvement Team 1**

Summer Term	Autumn Term		Spring Term	
End of term review. Action taken. Impact.	Revised Action as result of review	End of term review. Action taken. Impact	Revised Action as result of review	End of term review. Action taken. Impact

School Improvement Plan 2010 – 2011/12 School Improvement team 2.

Whole School Aim activity relates to: (refer to school vision and aims)		Innovation	Date Started
All children will feel valued and can achieve their full potential so they can contribute positively to society.			April 2010
Goal: (desired result – outcome of action)			
Curriculum and organisation will be improved and will enable children to become confident independent learners.			
Objective: (what different/specific objectives set to achieve goal)		Success Criteria: (indicator linked to each objective to show it has been achieved)	
<ol style="list-style-type: none"> 1. To review curriculum provision to ensure it is a creative, stimulating curriculum with good coverage of all subjects and fulfils the requirements of the New primary Curriculum. 2. To develop and improve community cohesion. 3. To implement the anti-bullying pledge 4. To achieve Healthy School status (July 2011) 		<ol style="list-style-type: none"> 1. Whole school curriculum provision reviewed with clear cross curricular links and extended opportunities meeting the requirements of the new curriculum. (Sept 2011) 2. Community Cohesion improved, extended links made in the community and embedding the Difference and Diversity project into Y3 and Y4. 3. Anti Bullying pledge agreed and implemented impacting on the quality of behaviour in school (evidenced through in school monitoring and parental questionnaires) 4. Healthy School Status Achieved 	
Action Planned: (to achieve specific objectives – time and who responsible) (break down action into terms)		Resources /PD	Monitoring (completed by SLT)
<p>Objective 1.</p> <ol style="list-style-type: none"> a) Review staff organisation to meet school needs and curriculum design (May 2010-MM and SLT) b) Identify school priorities linked to New Curriculum (May 2010 – SMT and school community) c) Audit curriculum provision, design and coverage (Year groups – July 2010) d) Areas of Learning Teams to review and identify new learning experiences/opportunities with reference to new curriculum, school curriculum audit of MTPs - To enrich the curriculum making further use of the outdoor learning school grounds, local and wider community, after school clubs, extended learning and etc. (April 2011 – ALTs) e) Improve school grounds as a result of new activities to include playground markings, outdoor classroom, greenhouse, extending the trim trail, etc. f) Essentials for Life and Learning Leaders to audit to ensure coverage (Curriculum Provision Mapping exercise completed – Jan – Apr 2011 SMT) g) Year groups to complete STPs on a rolling basis (Autumn 2011 completed July 2011 – Spring 2012 completed Dec 2011 – summer 2012 completed April 2012) <p>Objective 2.</p> <ol style="list-style-type: none"> a) Audit of provision made for community cohesion (All staff – April 2010) 		<p>2 x staff meetings and 1 x SMT</p> <p>6x staff meetings and 2 teacher days</p> <p>10 days non-contact 2010 – 2011</p> <p>Outdoor classroom</p>	<p>Dec 2010 and April 2011</p> <p>Spring 2012</p> <p>Termly and updated.</p>
Impact/Evaluation (complete in year see overleaf)			

<p>b) Report and action plan completed by SLT – use ofsted guidance to structure report and inform SEF (May 2010)</p> <p>c) Complete Difference and Diversity project in Y3 review and extend to Y4 in Sept 2010</p> <p>d) Identify action to take to further promote cohesion developing current work through additional local and wider community activities, further links with schools, celebrating different festivals, international links and develop of ICT (cross reference with new curriculum design) July 2010 SIT lead MN</p> <p>Objective 3.</p> <p>a) Working with LA analysis of Pupil and staff questionnaire completed to inform action plan (April 2010 – JF and SE)</p> <p>b) Work with the school community to agree a definition of bullying. (summer 2010)</p> <p>c) Review anti-bullying policy (July 2010)</p> <p>d) Plan and hold anti-bullying week annually (JF and SE – July 2010)</p> <p>e) To plan and provide more opportunities to work with a buddy (Reading, etc.)</p> <p>f) When undertake review of PSHE curriculum explore use of SEAL materials (Link to difference and diversity project)</p> <p>Objective 4.</p> <p>a) Identify a lead person (MM May 2010)</p> <p>b) Audit current provision (May 2010)</p> <p>c) Plan action to take for a re-launch Sept 2010 – work with school kitchen (improve experience at lunchtime – review supervision and organisation. Introduce pre-order system for dinners. Improve dining room environment, playground games and play leaders, end of dinner whole school activity)</p> <p>d) Training programme for supervisors (managing behaviour, playground games, healthy eating, etc.</p> <p>e) Questionnaire to children and parents re healthy eating (packed lunches), Tuck shop, what like to eat? etc.</p> <p>f) Provide healthy workshops for parents</p>	<p>@£5000</p> <p>School Grounds development @£4000</p> <p>SM Plan anti-bullying week</p> <p>Supervisor training 3 x 1 ½ hrs on training days</p>		
<p>Quality Characteristics: (when the goal is achieved what will the provision/activity/result look like across the school)</p> <ul style="list-style-type: none"> Children working independently at age-related expectations experiencing a relevant, challenging and creative curriculum and fulfilling the requirements of the New national curriculum with effect from September 2011. 		<p>Notes/Issues: (to be completed in year)</p>	

SIP – Termly Review and Action Planning**School Improvement Team 2**

Summer Term	Autumn Term		Spring Term	
End of term review. Action taken. Impact.	Revised Action as result of review	End of term review. Action taken. Impact	Revised Action as result of review	End of term review. Action taken. Impact

SIP Resources and Professional Development Plan

Priorities for 2010 – 2011

Innovation

- Further developing Assessment for Learning (Using assessment information to set clear targets through tracking and raising levels of expectations.) To ensure early identification of children not on track and providing appropriate support and challenge and to provide more guidance for pupils to support them in developing the skills and attitudes to complete peer and self-assessment. To continue to embed layered targets for writing and maths across the school and use them consistently to their full potential (BLP – Assembly Themes)
- Improving the consistency and quality of teaching and learning by developing strategies that promote active learning; opportunities for independent learning and application of knowledge and skills; focussed marking and target setting
- To review curriculum provision to ensure it is a creative, stimulating curriculum with good coverage of all subjects and fulfils the requirements of the New primary Curriculum.
- To further develop and improve community cohesion

Maintenance

- To work towards school targets
- To further develop APP in Mathematics
- To implement the anti bullying pledge (summer 2010)
- Improve subject leader's knowledge and skills
- Achieve Healthy School Status (Dec 2010)

Staff Meetings Focus

Summer

Guided Group work
Maths – Using and Applying
Espresso training
Teaching and learning
Curriculum Planning
Pupil Progress meetings (PPM)

Autumn

APP
Curriculum Planning
Teaching and learning
Pupil Progress meetings (PPM)
Subject Leader Training
Community Cohesion
Use of the outdoor environment

Spring

Accelerating progress
Curriculum Planning
PPM
Teaching and learning
Assessment

Teacher Days

6 th September 2010	General/ Curriculum Planning
23 rd October 2010	Curriculum Planning
18 th February 2011	Curriculum Planning
13 th June 2011	Assessment and Reporting
11 th July 2011	Assessment/APP
12 th July 2011	Subject Leader Development

TA's and dinner supervisors to attend 3 training days as appropriate to address specific training needs.

TA's: Guided group work, supporting children in introduction, etc.

Supervisors: Managing behaviour, Playground games, Supporting Healthy Eating.

SIT Title	Lead	Priority
School Improvement Team 1 Accelerating progress and raising standards	MM	Accelerate progress and raise standards (ISP) Developing subject leadership Assessment and Tracking
School Improvement Team 2	MN & JF	Curriculum Development Developing Community Cohesion Review and amend curriculum planning

Expectations and purpose:

The school improvement teams will be responsible for devising, implementing, monitoring and evaluating the impact of their initiatives. The SIT's will meet 1 to 2 x per term and will have 1 day non-contact per term. The impact will be measured with reference to the following criteria:

How has the action impacted on:

1. Raising levels of achievement.
2. Teaching and Learning
3. Ethos and Organisation of school
4. Children's attitudes and behaviour/emotional welfare.
5. Parents attitudes
6. Five outcomes of the ECM agenda.

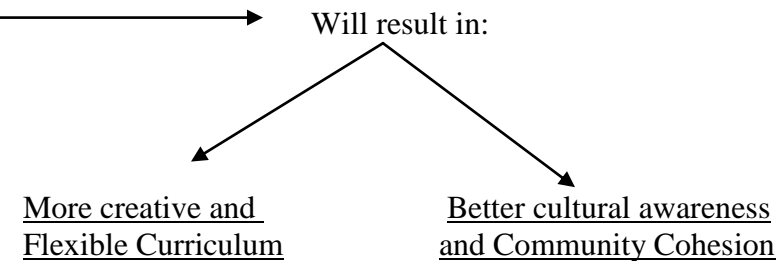
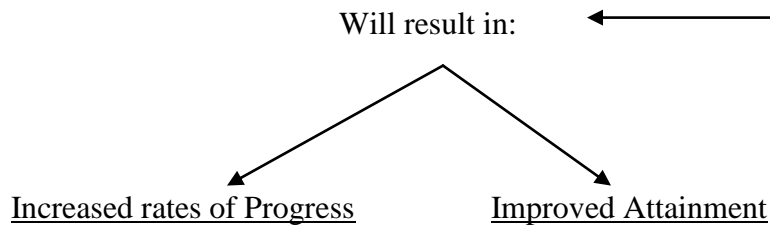
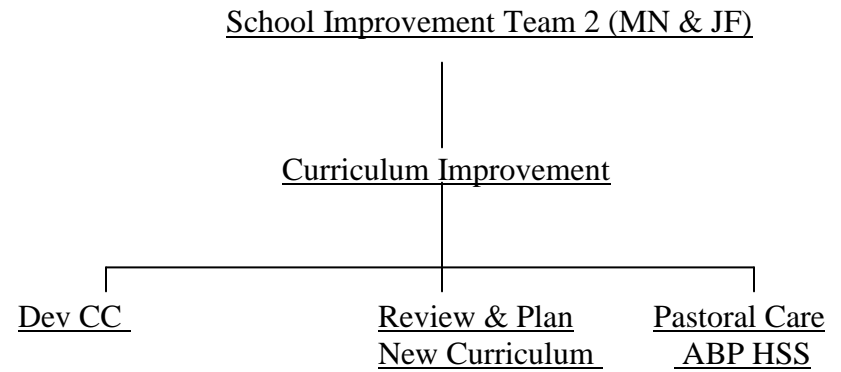
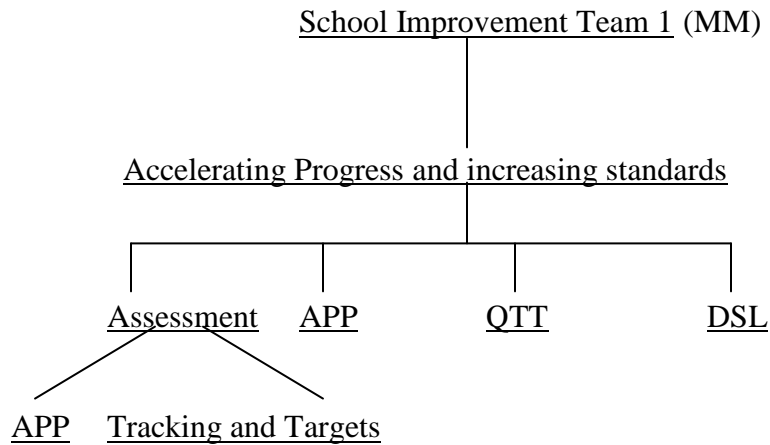
Not every action will impact on every criteria. However they should always impact on raising levels of achievement and children's attitudes/behaviour. We must always ask the question. So what has been the result of what we have done? If there is no positive outcome then we should not be doing it.

How will this information be collected and shared?

- Tracking Data and evidence will be used to monitor achievement.
- Scrutiny of books and planning
- Observation will be used for peer support and monitoring of teaching and learning. – related to specific priorities. e.g. AFL, Age related expectations and adherence to policies.

The School Improvement Teams will operate in the following ways:

- There will be one - two SIT meetings per term.
- Termly Monitoring Plan will be informed and inform SIT meetings
- Termly Subject Leader Meetings will include discussion of termly report and audit trail evidence



- APP Assessing Pupils progress
- QTT Quality of Teaching and Learning
- DSL Developing Subject Leadership
- DCC Develop Community Cohesion
- ABP Anti Bullying Pledge
- HSS Healthy Schools Status

Whole School Priorities

Indicative Resource Plan

Innovation	Cost Implications (Resources)	Training	INSET/Activity
Teaching Improvement Programme TIP	Work with Partner teacher addressing issues @ 10 Days @£2500	Teaching and Learning SM	4 x Staff Meetings
Class Study Approach	@£1000		4x half days (1 for each year group)
Assessing Pupils Progress (APP) MA1, 3 and 4		Input from LA Moderation Meetings	2 x Staff Meetings
Raise Levels of achievement and achieve progress targets (Targeted Support)	@£5000 Boosters + other intervention strategies	PAM Meetings Teaching and Learning SM	4 x Staff Meetings
1 to 1 Tuition (For 30 children – 20 from Y6 and 10 from y4 commencing Sept 2010)	Funding provided through standards fund	1 to 1 tutors training provided by LA.	
Develop subject Leader monitoring and evaluating skills (Review of staff organization)	Supply cover for @ £3500	Analysis of Data and action planning	2 days Non contact (Teacher days) 3 x Staff Meetings
Improving Teacher Assessment	6 pieces of leveled work per year	Moderated leveling	3 x SM
Audit and review of planning for new curriculum	3 days supply cover		2 Teacher Days 6 staff meetings

Additional Curriculum Resources	Cost Implications	Spending Priorities	INSET
Numeracy	£750		3 x staff meetings
Literacy	£2500	Y3 Reading Scheme (Follow on from KS1) Monitoring	4 x staff meetings
Science	£500		2 x staff meetings
ICT	£2600	Ink Espresso Subscription	3 x staff meetings
SEN	£750		
History	£350		
Geography	£500	Replace all atlases and Map Start books	
Art	£300		
Music	£650		
Design Technology	£500		
P.E.	£200		
R.E.	£200		
Library	£400		
Environment	£550	Green Team	
P.S.H.E.	£150		
MfL	£1400	Supporting local MfL network	
Buildings & Premises Development Plan			
Classroom Improvements	£1000		
ICT replacement programme	£15000	Server, 4 x Smart boards	
Harnessing Technology	£7750	Broadband SLN2	
Playground and Grounds Development	£10000	Redesign playground, games, outside classroom, Greenhouse	

